



Dartmouth Planning Office
 4 Currier Place, Suite 306
 Hanover, NH 03755

Dear Neighbors,

Keeping you informed of Dartmouth planning in the Lyme Road South Precinct

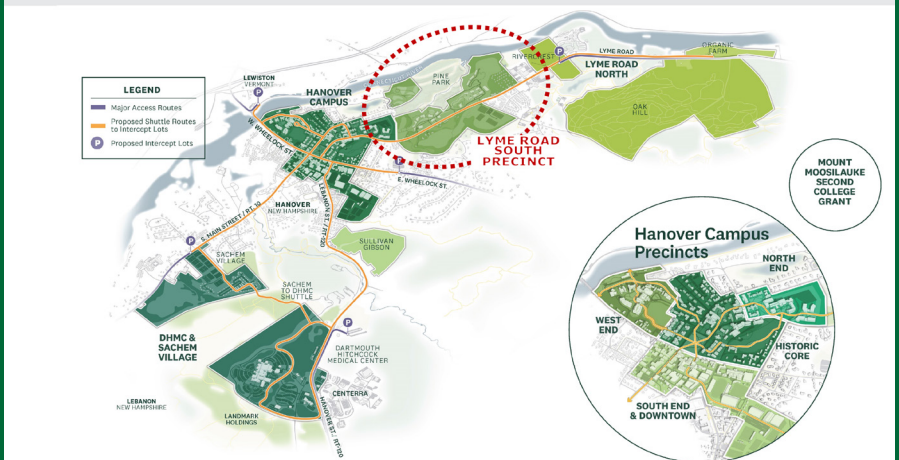
Please join us on Thursday, Jan. 20 from 7-8 p.m. for an informational and interactive virtual community meeting to learn about Dartmouth’s planning in the Lyme Road South area.

We’ll provide an overview of Dartmouth’s Strategic Framework and explain the long-term need for student housing. We’ll also discuss the recent analysis of existing conditions at the Lyme Road South location, as well as draft planning principles and preliminary concepts for the area. Through polling, you’ll be invited to share how you use the Lyme Road area, your routes and destinations, and what you think may be needed in the way of amenities and improvements.

Please submit your questions via email to campus.planning@dartmouth.edu by Tuesday, Jan. 18. We’ll do our best to address questions received in advance during the meeting and will subsequently post FAQs to the project website.

Find a ZOOM link to the community meeting on the [project website](#).

Regional and Hanover Campus Precincts



DARTMOUTH

Dear Neighbors,

Jan. 13, 2022

We hope these mailings help keep you informed of Dartmouth's planning process to develop undergraduate housing along Lyme Road. We look forward to joining you at the virtual community meeting on Jan. 20.

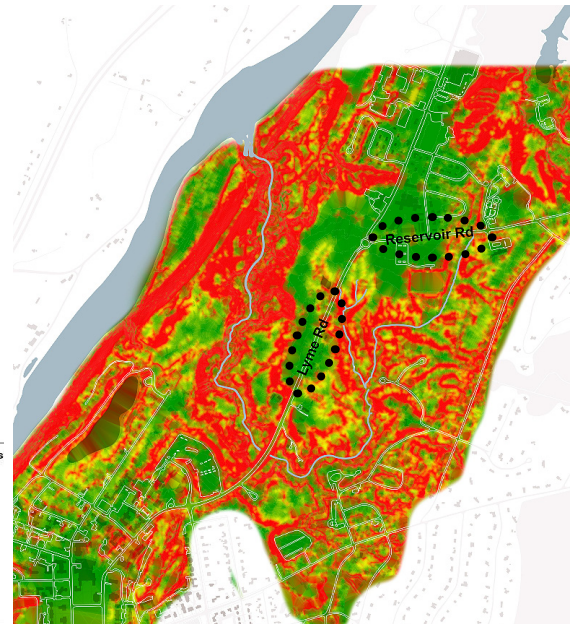
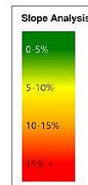
Recent Study Outcomes

On-site data collection and surveying work was initiated in December. Geotechnical engineers took 26 borings between Girl Brook and Reservoir Road on the east side of Lyme Road. The borings ranged in depth from 15 to 30 feet except for two borings that extended to about 100 feet to characterize the deeper soil profile. In general, the soils consist of a mixture of fine-grained soils, primarily silt with varying proportions of the fine sand and clay. Preliminary geotechnical reports will follow in a few weeks.

Snow and cold weather have put a damper on the team's ability to complete the wetlands field work. Based on data collected before the December snowstorm, important buffers to the brook and other wetlands areas were identified and mapped. Additional flagging is needed along the southern section of Girl Brook.

The surveyors were able to complete an initial monument review in the field. Following the deed research, additional field work may be necessary. Topographic verification and noting the location of important tree specimens will be completed soon.

This heat map depicts the slope of this parcel in 5% increments, with red being >15% grade.



More About the Jan. 20 Meeting

We look forward to sharing information with you and receiving your input at the upcoming community meeting. This webinar-style ZOOM session, led by Dartmouth and its consulting team, will cover the following topics:

Introduction of the planning team

Presentation

- What is the 2020 Strategic Framework and how does it inform the Lyme Road South planning?
- Why develop Lyme Road South now?
- What are the preliminary land-use concepts?
- How will this benefit the community?

Interactive polling will include questions to inform our physical planning, such as:

- What are some of the special and unique characteristics that define the Lyme Road area?
- How often, and for what activities, do you use the Garipay Fields, trails, and open spaces?
- How often do you use the Lyme Road MUP (multi-use path), bike lane, or Advance Transit?
- What destinations do you visit (e.g., Co-Op market, local schools, Cuttings Corner, etc.) and how often?
- What other amenities would you like to see in the Lyme Road area?

Questions? Please submit questions to the planning team by Jan. 19 and we'll do our best to address them during the meeting. You may also submit questions during the presentation using the Q/A feature which will be addressed in a follow-up communication. FAQs will be posted on our project website (campus-services.dartmouth.edu/projects).

How We'll Keep You Informed

Information about this project is available in the Planning & Design Phase section of the Campus Services Projects website at campus-services.dartmouth.edu/projects.

Email Campus.Planning@dartmouth.edu to let us know if you are interested in receiving periodic email notices and to share your thoughts or concerns.